

Space Contracts for ESA and EUMETSAT



All ESA / EUMETSAT contracts described below comprise the development of various sophisticated and innovative image processing systems. They have been implemented on parallel computer and standard UNIX systems.

Several products have been derived from the space contracts. For instance, the CineSat display software for Sun stations, and the initial version of the CineSat Nowcast system for short-range weather forecasting.

Parallel Computing Demonstrator for Space Applications



Project:

PARTECH - Parallel Computing Technical Demonstrator for Space Applications (1989)

Partner:

ESOC, European Space Operations Centre, Impuls

Description:

Transputer based prototype to demonstrate the benefit of parallel computing technology to space applications. The selected demonstrator applications included high-speed satellite image display and real-time satellite image processing.

Meteosat Image Rectification and Display

Project:

FERMI - Fast External Rectification of Meteosat Images (1990-1991)

Partner:

ESOC, European Space Operations Centre, Impuls

Description:

Development of the world's fastest parallel display system for high resolution Meteosat images (5,000 x 5,000 pixels). Interactive film-like animation facility for

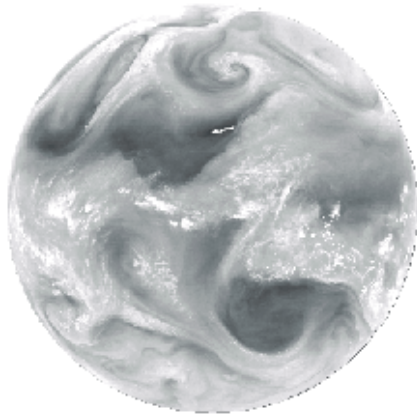
hundreds of these images including real-time zoom and pan and color manipulation even during running animation.

The developed TAW (Transputer augmented workstation) also included real-time Meteosat image rectification, i.e. the geographical correction of raw satellite images in the ESA ground segment prior to dissemination to end-users. New rectification algorithms have been developed, tested, and optimized for real-time performance.

Major Achievement:

The world's fastest digital image display system for high-resolution images, and a new real-time image resampling method tailored to the content of meteorological images.

1993 - First Real-time Wind Computer



Project:

FESIP - Fast External Satellite Image Processing (1992 - 1994)

Partner:

ESOC, European Space Operations Centre, Impuls

Description:

Development of the first real-time wind computer for the European Space Operation Centre, including a full automatic quality control of the computed wind information.

Additional software development for several meteorological products that are derived from image data, like Upper Tropospheric Humidity, Total Column Water, Wind Trajectories, etc.

Major Achievements:

For the first time ever, meteorologists had half-hourly cloud motion winds available for the full Meteosat Earth disk. The delivered system computed the information in 10 minutes (!) compared to the 4 computing hours of the previously existing wind processing.

The speed-up could be achieved by utilizing a specifically designed parallel computer platform (i860 / transputer). A surplus factor of 16 in speed could be gained by new and highly efficient mathematical algorithms.

The system also features a fully automatic quality control of the computed wind field.

Meteosat-5 Lens Correction Software

Project:

M5LENS - Meteosat-5 Lens Correction Software

Partner:

ESOC, European Space Operations Centre

Description:

Implementation of an on-ground correction software for Meteosat-5 images being distorted by a rotating lens in the satellite's imaging system.

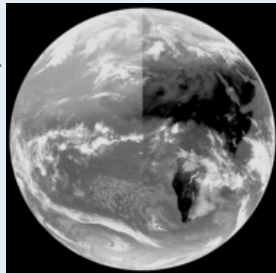
Meteosat-6 Anomaly Correction - The Software Glasses

The Meteosat-6 radiometer is severely affected by an irregular anomaly of unknown source. Two of the three image channels have their brightness levels distorted from line to line in an unpredictable way. The temperatures measured by this satellite differ up to 25% (more than 15 degree Celsius) from ground measurements and the reference satellite.

GEPARD was the only company to successfully propose a solution for the on-ground correction of the Meteosat-6 radiometer anomaly.

Left half:

Meteosat-6 infra-red image with a radiometer anomaly. The image is nearly ok at the South pole, but becomes brighter in the North. In this example Meteosat-6 measured a sea surface temperature of 5 degree Celsius in the Mediterranean sea during the summer season !



Right half:

Corrected Meteosat-6 Image. The correction does not affect the usual daily temperature variations. The anomaly is completely irregular. Neither the shape of the North-South anomaly nor the existence of an anomaly could be predicted from one image to the next.

This project saved an expensive satellite mission and became famous as **The Meteosat-6 'Software Glasses'**.

Projects:

M6STUDY - Feasibility Study on Meteosat-6 Anomaly Correction

M6C-ESA - Offline Meteosat-6 Anomaly Correction Software

M6C-EUM - Real-time Ground Segment Implementation of M6C

Partner:

ESOC, European Space Operations Centren and

EUMETSAT, European Organisation for the Exploitation of Meteorological Satellites

Description:

After several months of international investigation it turned out that the source of the Meteosat-6 anomaly could not be identified and that there is no proposal for an on-board fix of this problem.

Based on some very promising preliminary tests at GEPARD, ESA commissioned us with a feasibility study for the on-ground correction of the anomaly.

Within a few months, we took the steps from a successful offline demonstrator prototype to an operational, real-time correction facility, smoothly integrated into the EUMETSAT ground segment.

Major Achievement:

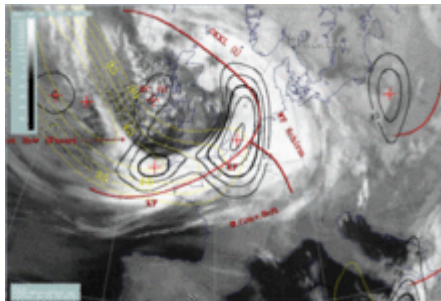
GEPARD developed algorithms and software that corrected the unpredictable radiometer anomaly of Meteosat-6 in real-time and with excellent accuracy - compared to a reference satellite.

- **Accuracy:** corrected Meteosat-6 images have a quality comparable to Meteosat-5
- **Real-time performance:** image correction is done while the satellite is still transmitting the image lines to the ground segment.

End users did not recognize any changes in product quality when operation switched from Meteosat-5 to Meteosat-6 - although the raw images provided by Meteosat-6 were severely corrupted.

Even better: The M6C correction method turned out to be a valuable quality control tool for satellite imagery. It also revealed a slight anomaly problem with Meteosat-5.

Automatic Satellite Image Analysis



Project:

ASIA - Automatic Satellite Image Analysis

Partner:

ESTEC, European Space Research and Technology Centre & ZAMG, Zentralanstalt für Meteorologie und Geodynamik (Central Austrian Met. Office)

Description:

Algorithm development for the combined analysis of satellite images, numerical model, and measurement data. The approach is based on fuzzy logic methods and can also handle the time and position offsets between the various data sources. The software demonstrator included the successful testing of this approach with Meteosat infra-red images and numerical weather prediction models.

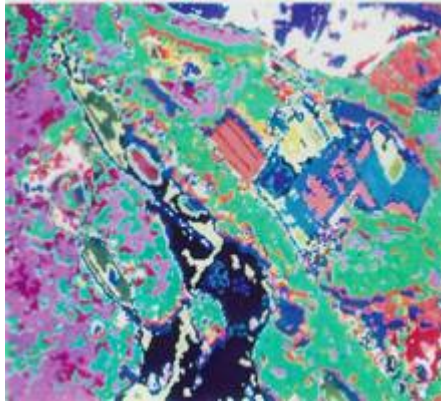
Major Achievement:

The developed approach forms now the basic framework for a real-time system

that automatically identifies weather phenomena and cloud configurations.

Other Satellite Image Processing

Forest Damage Classification from Airborne Images



Project:

FOREST-AIR - Forest Damage Classification from Airborne Images

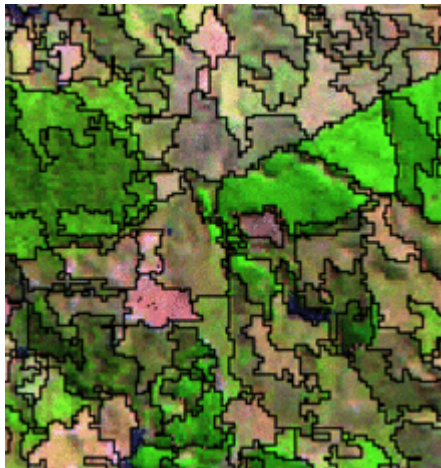
Partner:

ÖBIG, Österreichisches Bundesinstitut für Gesundheitswesen und Umweltschutz (Austrian Federal Institute for Health and Environment Protection)

Description:

Survey and prototype implementation of algorithms suitable for the automatic classification of forest damages from airborne infra-red images, and of image pre-processing techniques that assist the human interpreter.

Forest Damage Classification from Landsat Imagery



Project:

FOREST-SAT - Forest Damage Classification from Landsat Imagery

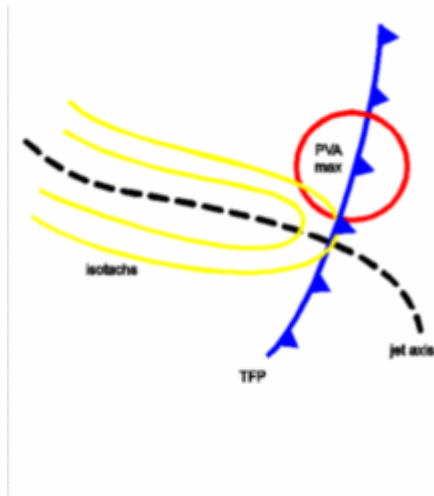
Partner:

ÖBIG, Österreichisches Bundesinstitut für Gesundheitswesen und Umweltschutz (Austrian Federal Institute for Health and Environment Protection)

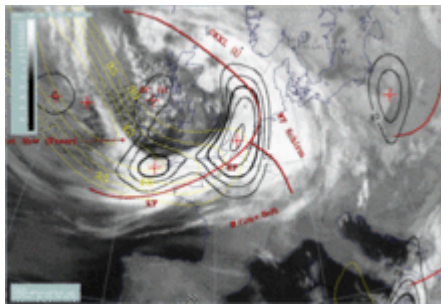
Description:

Operational software for multispectral Landsat image classification on a parallel computer platform.

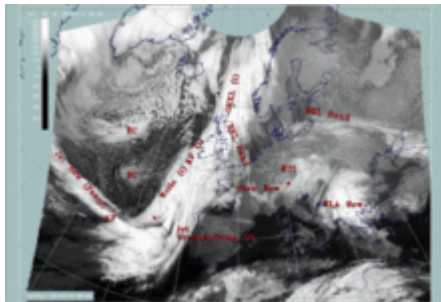
Automatic Identification of Conceptual Models



Conceptual Model: Jet Intensification



Fuzzy Fusion of Image & Models



Automatic System Classification

Project:

MISSION - Automatic Identification of Conceptual Models

Partner:

BMWV, Bundesministerium für Wissenschaft und Verkehr (Austrian Federal Ministry of Science and Transport) & ZAMG, Zentralanstalt für Meteorologie und Geodynamik (Central Austrian Met. Office)

Description:

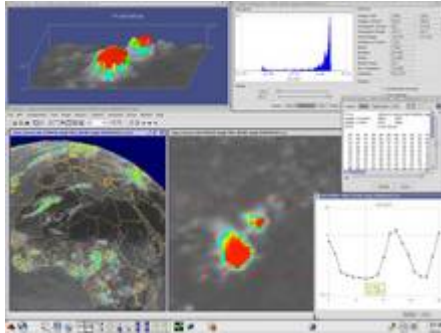
Method and system development for the joint automatic analysis of Meteosat images and numerical weather prediction models. The main focus in this project was on image analysis, in particular the identification of cloud textures, structures and configurations, and the recognition of special cloud objects like convective cells, S-forms, waves, spiral structures, fibres, etc.

The project has been partially funded by the Austrian Federal Ministry of Science and Transport. Two other projects contributed to this development - ASIA and CCELLS. More than 50% of the project has been financed from own resources in view of future sales.

Major Achievement:

The system is currently in operational use at ZAMG and other weather services for the automatic real-time detection of so-called 'conceptual models'. CMs are a classification of weather phenomena in terms of their appearance in satellite imagery and associated numerical weather prediction parameters. 30-40 models are currently automatically identified every 15 minutes.

Identification of Stratiform and Convective Cloudiness



Project:

CCELLS - Identification of Stratiform and Convective Cloudiness

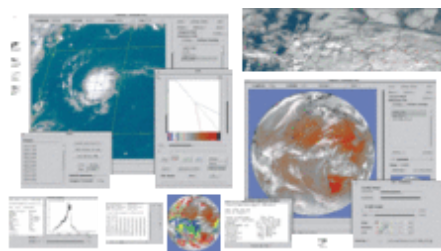
Partner:

DWD, Deutscher Wetterdienst (German Weather Service)

Description:

Two projects concerning the feasibility analysis and prototype implementation of methods for the automatic detection of convective cloud cells. Results have been incorporated in the CineSat software.

CineSat - Product Development



Project:

CineSat - Inhouse product development of a Satellite Cinema

Description:

CineSat is a powerful, high-performance, and feature-rich meteorological software suite for satellite image analysis, display, and processing. It features a real-time weather analysis and forecasting module based on satellite imagery, a high-performance and highly-configurable Automatic Product Extraction Server with a number of unique functions, and a strong and fast data display.

25 years ago, CineSat had started as an in-house research and development project, initiated by customer requests for a high-performance satellite image interpretation system. Designed to best possibly assist the forecaster's operational routine work. With start of Meteosat 2nd Generation in 2003, CineSat became a well appreciated standard software solution for real-time processing of meteorological data distributed via

EUMETCast.

Industrial Vision Systems

Video Analysis of Body and Limb Movement



Project:

BIAW - Video Image Analysis

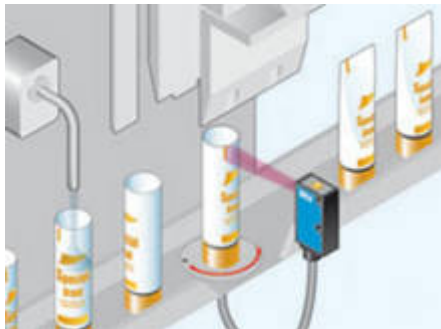
Partner:

AMST, Austria Metall Systemtechnik GmbH

Description:

PC-based image analysis system for recording, storage and interpretation of video images. The system is used for the measurement and documentation of limb positions and angles in video images of human bodies.

High-speed Quality Control of Plastic Tube Prints



Project:

TUBEPRINT - High-speed Quality Control of Plastic Tube Prints

Partner:

Tupack Verpackungen GmbH

Description:

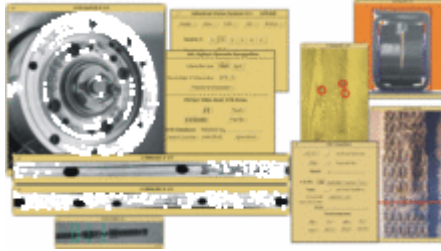
Feasibility study and design of a system for real-time quality control of the color printing on plastic tubes (e.g. for tooth paste tubes).



White tubes are being heated over a flame and then pressed against a high-speed printing wheel which applies color prints on two tubes per second. The main challenge in this project was that the color printings have to be controlled with an accuracy of about 1/10 mm while the tubes are deforming (cooling down) during rotation in front of a line scan camera. The line camera produces about 18 MB of RGB image data per tube. This means that 36 MB of randomly deformed image data had

to be controlled with pixel accuracy within
a second).

Feasibility Analysis and System Design of Vision Systems



Projects:

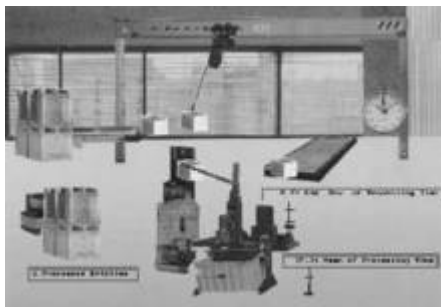
Several Feasibility Analysis and System Designs of Vision Systems

Description:

A number of customer and application specific feasibility studies and system designs for the automatic quality control of various products, like cables, wood, electronic and electric parts and devices, metallic vehicle parts, medical images, prints on product surfaces, textiles, etc.

Factory Process Simulation

1989 - 'Dream Fabric' at the Hannover Industrial Fair



Great echo on GEPARD's 'Dream Fabric' at the world's biggest industrial fair. Simulation of production processes with real-time interaction features and high-speed, real-world image animation (25 images per second) on a parallel computer.

Production Line Optimization for Philips Monitor Tubes



Project:

PRECOAT & BACKEND - Production Line Optimization for Monitor Tubes

Partner:

Philips

Description:

Two projects concerning modelling, simulation, animation and optimisation of the monitor and TV tube production lines. The client successfully restructured his manufacturing line according to the results of this optimisation analysis.

SIMUL_TR - Real-time Simulator on Parallel Computers



Project:

SIMUL_TR - A general purpose, transputer-based, real-time simulation system

Partner:

SIMUTECH

Description:

Product development of a general purpose real-time simulator featuring

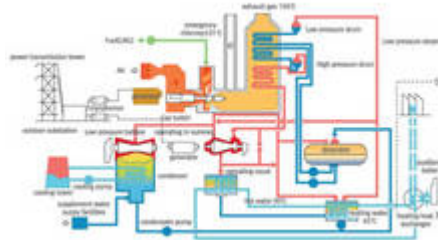
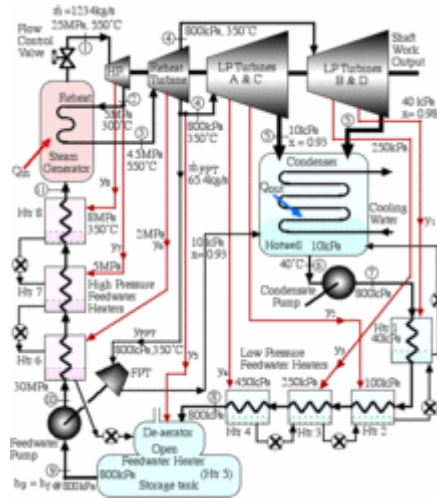
- continuous models (differential equation systems)
- discrete simulation (event- and time triggered)
- implementation on a parallel computing hardware
- high-speed analogue and digital interfaces
- a real-time, real-world animation facility
- real-time recording of simulation and IO-data

The simulator can react to digital and analogue inputs in real-time by using external signals as input to the simulation model and outputting digital and analogue signals from the model to an attached device (hardware-in-the-loop simulation).

Its application ranges from complex factory process simulations, high-performance animation display with 25 images per second, to high-speed test beds (hardware-in-the-loop simulations) for devices.

The system was used as basis for several customer specific development projects (see below).

Steam Power Plant Simulation and Optimization



Steam Power Plant Flow Chart

Project:

STEAMSIM - Steam Power Plant Simulation and Optimization

Partner:

SGP, Simmering-Graz-Pauker

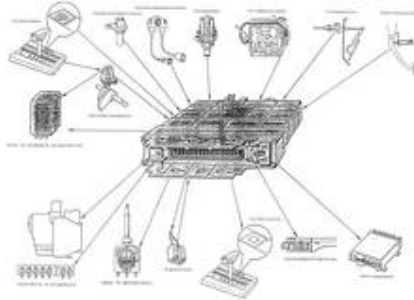
Description:

The customer had already developed the simulator software for all major components of a steam power plant. Our staff developed the mathematical framework and software that solves all issues when - during the design phase of a new power plant - different components are being plugged together and simulated in order to optimise the efficiency and performance of the projected plant.

In particular, it solved all zero-search and steady-state problems related to the typical circular flow of water and steam through the component arrangement.

Hardware-in-the-Loop Simulation

Award Winning Test Bed for Automatic Gear Control in VW Cars



Project:

VW-FTS - Functional Testing System for Automatic Gear Control (1991)

Partner:

Volkswagen AG, hema



Microtronic Application Price 1991

If you drive on the highway full speed, what will happen if a signal cable breaks and your gear control does not get information about current speed ?
Will it change down to first gear ?
Or even go to parking mode at 100 miles per hour ?

Thorough testing of the device logic will protect your life.

Description:

Development of a real-time test bed for car electronics for Volkswagen. A high-level simulation language allows for the very detailed description of the environment in which the gear control device operates; e.g. complex differential equation systems to describe the motor behaviour, event driven models of cable breaks and other critical situations, as well as real-time interaction via mouse, keyboard, and analogue and digital signals. It utilises high-performance real-time digital and analog IO-processing hardware for interaction between the simulation computer and the connected electronic device.

The system reads the device's signals, simulates the motor's and the car's reaction by solving 50 complex differential equations more than hundred times a second, and feeds the external device again with analog and digital signals from simulated car sensors (Hardware-in-the-Loop).

Major Achievement:

Before having this test bed available, engineers at Volkswagen had to perform about 30,000 km of partly dangerous test drives per year to test the gear control device under all possible stress and fault situations.

With this powerful tool it became possible to fully automate these test procedures without further affecting the safety of test personnel.

Real-time Controller Hardware for a Flight Centrifuge

**Project:**

FLIGHTSIM - Real-time Controller Hardware for a Flight Centrifuge

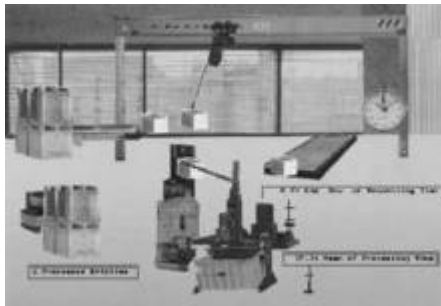
Partner:

AMST, Austria Metall Systemtechnik GmbH

Description:

Customer specific design and production of a high performance parallel computer system including fast analogue and digital IOs to control a large flight simulator centrifuge.

Hardware-in-the-Loop Simulator for VOEST Alpine

**Project:**

VAI-SIM - General Purpose Hardware-in-the-Loop Simulator for VOEST Alpine

Partner:

VAI, VOEST Alpine Industrieanlagenbau GmbH

Description:

Real-time simulator (SIMUL_TR) with a number of analogue and digital IOs that can be connected to various electronic devices of the customer. The device environment can be specified by a fully featured standard simulation language.

Environment Pollution Modelling

Immission Simulation Campaign for a Single Power Plant



Project:

IMMIS-DUERN - Immission Simulation for Power Plant Dürnrrohr

Partner:

ÖBIG, Österreichisches Bundesinstitut für Gesundheitswesen und Umweltschutz (Austrian Federal Institute for Health and Environment Protection)

Description:

Simulation software for computation of SO₂ and NO_x emissions caused by a single power plant. The simulation models and parameters have been deduced from more than 40.000 measurement data and implemented on a parallel computer.

Design for the Parallel Implementation of an Immission Simulator

Project:

IMMIS-FZS - Concept and Design for the Parallel Implementation of an Immission Simulator

Partner:

AIT (former Austrian Research Centre Seibersdorf)

Description:

Feasibility study for aerosol transport simulation on a parallel computing platform.

Immission Simulator for the Austrian City of Salzburg

**Project:**

IMMIS-SBG - Immission Simulator for the Austrian City of Salzburg

Partner:

ÖBIG, Österreichisches Bundesinstitut für Gesundheitswesen und Umweltschutz (Austrian Federal Institute for Health and Environment Protection) in cooperation with Salzburg Urban Management

Description:

High performance simulator for emission control and immission forecasting for the Austrian city of Salzburg. The project required to simulate the impact on ground pollution of the emissions of approximately 600 single sources and of 1,000 area sources. The impact on 76,000 points of the city's territory was calculated for each half an hour of the year, i.e. for 17,500 meteorological situations. The computing had to be performed in two steps; first, to compute the base immission situation (data base) for a complete reference year. Secondly, it is frequently used for urban development decisions, to evaluate the expected impact of new emittents under selected meteorological conditions.

Major Achievement:

The estimated time for computing the immission data base on a standard mainframe computer in 1988 was 2.5 years. This could be reduced with the delivered simulator (parallel computing hardware) to about 14 days. The impact of new emittents in a specific meteorological situation could be computed within half a second. Due to this excellent performance, the system could be used as an interactive urban planning tool.